



Win2PDF Users Guide

© 2006 Dane Prairie Systems, LLC

Win2PDF

© 2006 Dane Prairie Systems, LLC

All rights reserved. No parts of this work may be reproduced in any form or by any means - graphic, electronic, or mechanical, including photocopying, recording, taping, or information storage and retrieval systems - without the written permission of the publisher.

Products that are referred to in this document may be either trademarks and/or registered trademarks of the respective owners. The publisher and the author make no claim to these trademarks.

While every precaution has been taken in the preparation of this document, the publisher and the author assume no responsibility for errors or omissions, or for damages resulting from the use of information contained in this document or from the use of programs and source code that may accompany it. In no event shall the publisher and the author be liable for any loss of profit or any other commercial damage caused or alleged to have been caused directly or indirectly by this document.

Created: October 2006 using Win2PDF Pro.

Table of Contents

Foreword	1
Part I Installing Win2PDF	4
1 Win2PDF and Win2PDF Pro	4
2 Win2PDF Terminal Server Edition and Win2PDF Pro Terminal Server Edition	4
3 Deploying Win2PDF	4
Part II Using Win2PDF	8
1 Creating a PDF file	8
2 Advanced Settings	9
3 Merging to an existing PDF file	10
4 Fonts	11
5 Font Helper Application	13
6 Paper Sizes	13
7 Application Settings Vs. Default Settings	15
8 Resolution	15
9 Sending PDF files to a PDA	16
10 Win2PDF Pro Settings	17
Document Information	17
Document Security	18
Applying a watermark	20
11 Application Notes	21
Microsoft Word	21
Microsoft Excel	21
AutoCad	21
Internet Explorer	22
Part III Purchasing Win2PDF	26
1 Online	26
2 Purchase Orders	26
3 Registering Win2PDF	27
Part IV Frequently Asked Questions	30
1 Win2PDF FAQ on the Internet	30
2 Does Win2PDF support Windows 95/98/ME?	30
3 What type of fonts does Win2PDF support?	30
4 I'm a noncommercial user. How do I remove the extra page from each document?	30
5 How can I control the PDF file name without prompting?	30
6 Does Win2PDF support user defined page sizes? How can I add a custom page size to Win2PDF?	

7	Does Win2PDF support compression?	31
8	How can I improve the quality of bitmap images?	31
9	Does Win2PDF create PDF files that are optimized for web downloading?	32
10	Does Win2PDF support bookmarks?	32
11	Can Win2PDF be used on a web server?	32
12	Is it possible to print multiple worksheets in a single Excel workbook to a single .pdf file? !	
13	Does Win2PDF support Asian character sets?	32
14	Is it legal to create PDF files with Win2PDF?	32
15	Can Win2PDF append to an existing PDF file?	32
16	When installing Win2PDF, I'm get the error message "AddPrinter error 126."	33
Part V Developer Information		36
1	Windows Printer Interface	36
2	Using the registry	36
	Registry Overview	36
	Specifying an output file name	38
	Merge Options	40
	Setting Document Information	40
	Enabling encryption, e-mail, view, and print PDF Options	41
	Setting E-mail Options	41
	Controlling Encryption Options	42
	Disabling File Save Options	42
	Automatically Executing an Application	43
	Watermark Options	43
	Mail Helper Application	44
3	Programming Environments	45
	Visual Basic 6.0	45
	Using the Printer object	45
	Using the Win32 API	46
	Crystal Reports	49
	Microsoft Access	50
Part VI Dane Prairie Systems Company Information		52
	Index	53

Foreword

Make everything as simple as possible, but not simpler.
- Albert Einstein

Part



1 Installing Win2PDF

1.1 Win2PDF and Win2PDF Pro

To install Win2PDF, log into your PC as an Administrator and run the Win2PDF install program. After you run the install program, you will have a new printer in the printers folder named "**Win2PDF**".

If you are evaluating Win2PDF, you can start creating PDF documents immediately. The evaluation version is fully functional, but every PDF document will have an extra trailer page with Win2PDF product information. Also, a registration reminder dialog will occasionally display.

The Win2PDF Pro install program can only be downloaded after you purchase the product. If you already have Win2PDF evaluation version installed, you do not need to uninstall Win2PDF before running the Win2PDF Pro install program.

If you have purchased Win2PDF, you can enter your registration code by following the instructions in "registering Win2PDF".

1.2 Win2PDF Terminal Server Edition and Win2PDF Pro Terminal Server Edition

To ensure that Win2PDF is installed for multi session use, the Win2PDF install program should be run from the control panel "Add/Remove Programs". Log in as an administrator and open "**Add/Remove Programs**", and select on the "**Add New Programs**" icon, and click on the "CD or floppy" button.

The Add New Programs wizard will ask you to insert the installation floppy or CD. You can ignore this step and click "**Next**". On the next dialog, click the "**Browse**" button and select the Win2PDF install program. After the Win2PDF install has completed, click "**Finish**" to close the Add New Programs wizard. Once Win2PDF is installed, it will be available to all local users and all terminal server users.

If you are evaluating Win2PDF, you can start creating PDF documents immediately. The evaluation version is fully functional, but every PDF document will have an extra trailer page with Win2PDF product information.

If you have purchased Win2PDF, you can enter your registration code by following the instructions in "registering Win2PDF".

1.3 Deploying Win2PDF

If you are deploying Win2PDF to a large number of computers (50+), Dane Prairie Systems can create a customized version of the Win2PDF install program that will automatically register each installed copy of Win2PDF to your company.

The following command line options are supported by the Win2PDF install:

/SILENT, /VERYSILENT

Instructs Setup to be silent or very silent. When Setup is silent the wizard and the background window are not displayed but the installation progress window is. When a setup is very silent this installation progress window is not displayed. Everything else is normal so for example error messages during installation are displayed and the startup prompt is (if you haven't disabled it with the '/SP-' command line option explained above)

If a restart is necessary and the '/NORESTART' command isn't used (see below) and Setup is silent, it will display a "Reboot now?" message box. If it's very silent it will reboot without asking.

/NORESTART

Instructs Setup not to reboot even if it's necessary.

If you invoke the install with the following command line, it will bypass all user intervention, hide the progress bar, and it will not reboot even if necessary.

```
w2pdf.exe /VERYSILENT /NORESTART
```

The Win2PDF install only has to reboot if you are upgrading a previous installation of Win2PDF.

/SUPPRESSWARNINGS=nowarnings

Instructs Setup to suppress Win2PDF specific warnings that can occur when installing on terminal servers, such as the following message:

"Server operating system detected. If you decide to purchase Win2PDF and intend on using the product in a multi user server based application, you must purchase a server license of Win2PDF."

/SUPPRESSMSGBOXES

Instructs Setup to suppress message boxes. Only has an effect when combined with '/SILENT' and '/VERYSILENT'.

The default response in situations where there's a choice is:

- Yes in a 'Keep newer file?' situation.
- No in a 'File exists, confirm overwrite.' situation.
- Abort in Abort/Retry situations.
- Cancel in Retry/Cancel situations.
- Yes (=continue) in a DiskSpaceWarning/DirExists/DirDoesntExist/NoUninstallWarning/ExitSetupMessage/ConfirmUninstall situation.
- Yes (=restart) in a FinishedRestartMessage/UninstalledAndNeedsRestart situation.

5 message boxes are not suppressible:

- The About Setup message box.
- The Exit Setup? message box.
- The FileNotInDir2 message box displayed when Setup requires a new disk to be inserted and the disk was not found.
- Any (error) message box displayed before Setup (or Uninstall) could read the command line parameters.
- Any message box displayed by [Code] support function MsgBox.

/LOG

Causes Setup to create a log file in the user's TEMP directory detailing file installation and [Run] actions taken during the installation process. This can be a helpful debugging aid. For example, if you suspect a file isn't being replaced when you believe it should be (or vice versa), the log file will tell you if the file was really skipped, and why.

The log file is created with a unique name based on the current date. (It will not overwrite or append to existing files.)

The information contained in the log file is technical in nature and therefore not intended to be understandable by end users. Nor is it designed to be machine-parseable; the format of the file is subject to change without notice.

/LOG="filename"

Same as /LOG, except it allows you to specify a fixed path/filename to use for the log file. If a file with the specified name already exists it will be overwritten. If the file cannot be created, Setup will abort with an error message.

/NOCANCEL

Prevents the user from cancelling during the installation process, by disabling the Cancel button and ignoring clicks on the close button. Useful along with '/SILENT' or '/VERYSILENT'.

Part



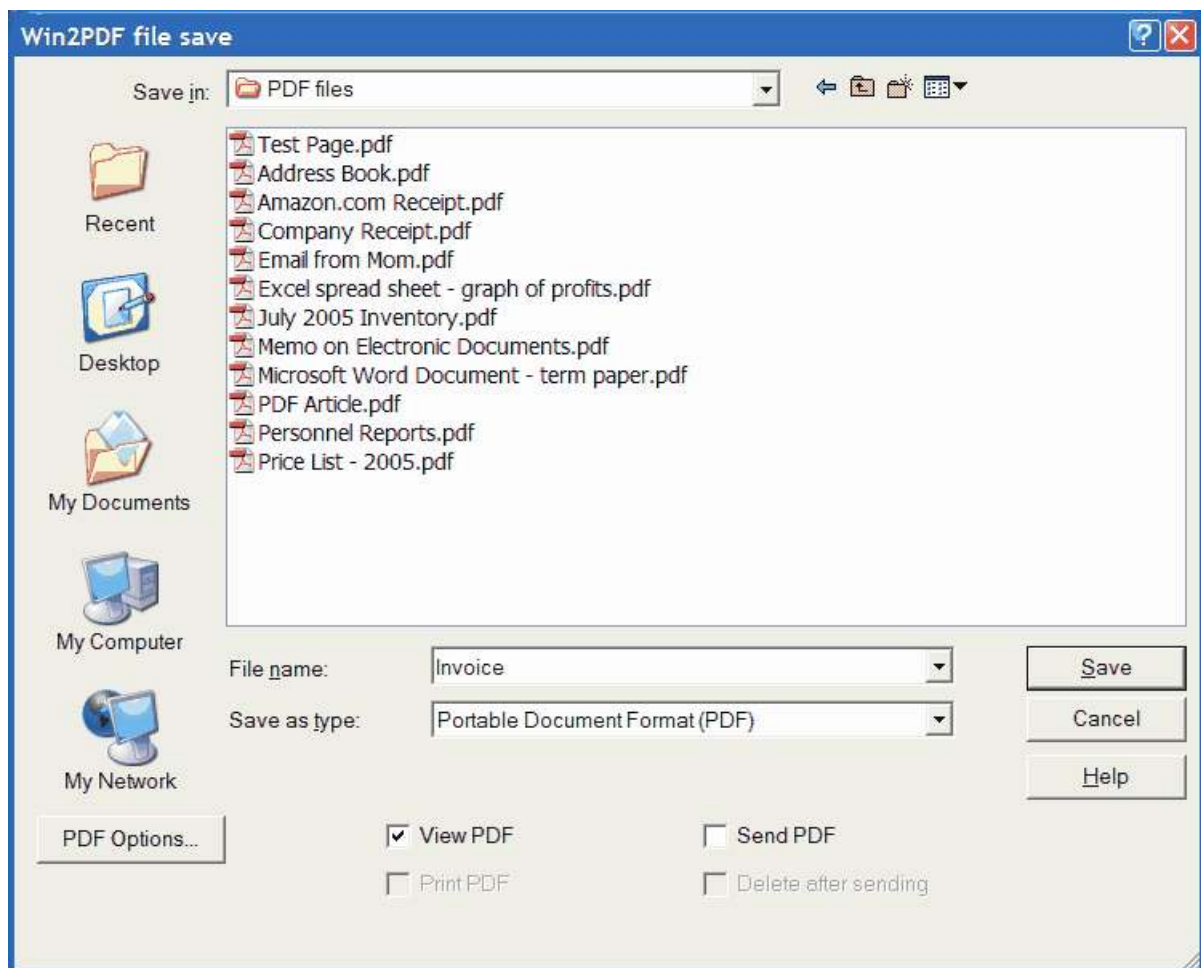
2 Using Win2PDF

2.1 Creating a PDF file

The Win2PDF installation creates a printer in the printers folder named Win2PDF.

To create a PDF file:

- Open a document from a Windows application (MS-Word, Excel, Internet Explorer, etc.)
- Print the document as you normally do but select the Win2PDF printer
- You will be prompted to enter the name of the PDF file, as shown on this screen:



The default file name is supplied by the sending application. You can choose a number of optional actions to take after the PDF file is created by selecting the check boxes. The options include:

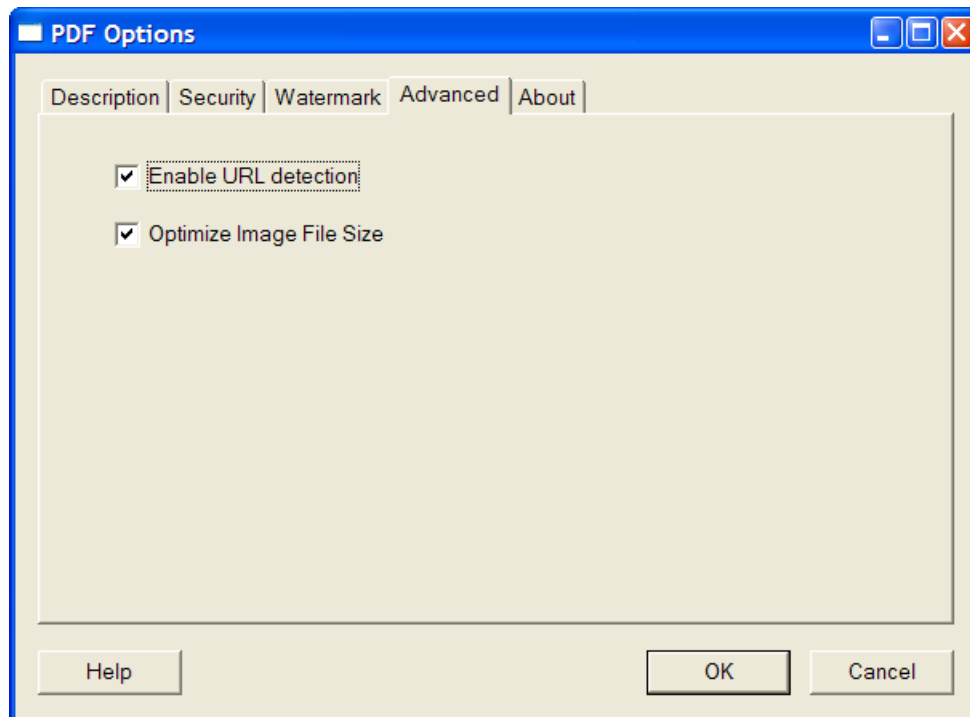
- View PDF - Opens the PDF file in the default PDF viewer after the file is created.
- Print PDF - Prints the PDF to the default printer after the file is created. This option is only available when Win2PDF is not the Windows system default printer.

- Send to Palm - Synchronizes the PDF file with Acrobat Reader for PalmOS. This option may be hidden if the Palm desktop software is not installed on the PC. More information on this feature is available in "Sending PDF files to a PDA".
- Send PDF - Opens a new email message using the default MAPI-compliant email client and attaches the PDF file to the message. The email program is specified in the Internet Options icon in the Windows control panel. If the Win2PDF Mail Helper application is installed, the Mail Helper application will be opened to send the email instead of the default MAPI client.
- Delete after Sending - Deletes the PDF file after it has been sent using the "Send PDF" option.

You can use the file save dialog to browse to a new location before saving the PDF file. Win2PDF remembers this location, and will use the same location the next time you create a PDF file.

2.2 Advanced Settings

The "**PDF Options**" dialog contains advanced settings for Win2PDF.



Win2PDF can automatically convert web addresses beginning with "**http**" and "**www**" to PDF hyperlinks. The hyperlinks are outlined in a dashed rectangle. If you want to disable this automatic URL detection, you can uncheck the "**Enable URL detection**" check box. The remaining settings are only used in Win2PDF Pro, and are covered in the "Document Information" and "Document Security" sections of "Win2PDF Pro Settings".

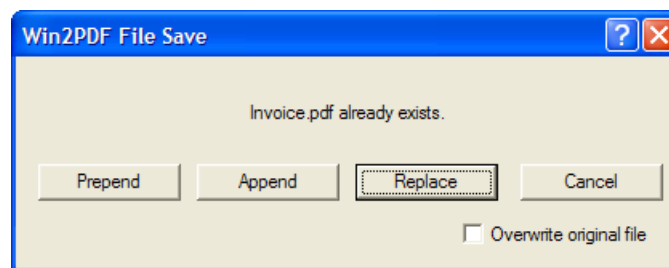
When the "**Optimize Image File Size**" option is checked, Win2PDF compresses all

images using JPEG compression. This results in smaller file sizes, but can reduce the image quality of some images such as black and white scanned documents. Turning off this option can improve the quality of some types of images, but will also result in larger file sizes.

An administrator can disable or set a default options for all users with the "**Win2PDF Admin Utility**" available for download at:
http://win2pdf.corphelp.net/?_a=downloads

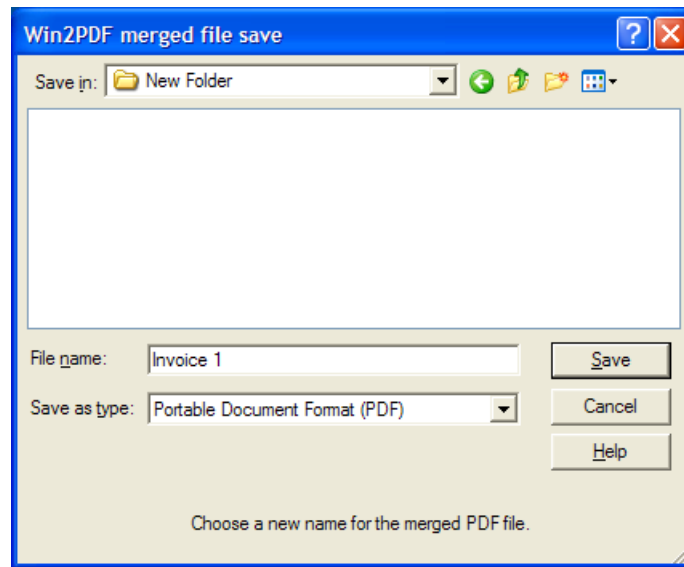
2.3 Merging to an existing PDF file

If you select a file in the file save dialog that already exists, Win2PDF will display the following dialog:



The "**Prepend**" button will create a new document containing the existing PDF file and will insert the new document information at the beginning of the file. The "**Append**" button will create a new document containing the existing PDF file and will add the new document information to the end of the file. The "**Replace**" button will overwrite the existing PDF file, and the "**Cancel**" button will cancel the PDF creation without affecting the existing PDF file.

If the "**Overwrite original file**" check box is checked, the "**Prepend**" and "**Append**" buttons will overwrite the original document with the new merged document. *This option should be used with caution since it cannot be undone.* If the "**Overwrite original file**" check box is not checked, both the "**Prepend**" and "**Append**" buttons will display an additional dialog to choose a new file name as shown below. In this case, the original PDF file will not be modified.



If you selected options to "**View PDF**", "**Print PDF**", "**Send to Palm**", or "**Send PDF**" in the first file save dialog, they will be performed after the file has been merged.

If you enabled encryption in Win2PDF Pro, the merged file will be encrypted. Win2PDF cannot append or prepend to an existing PDF file that is already encrypted.

2.4 Fonts

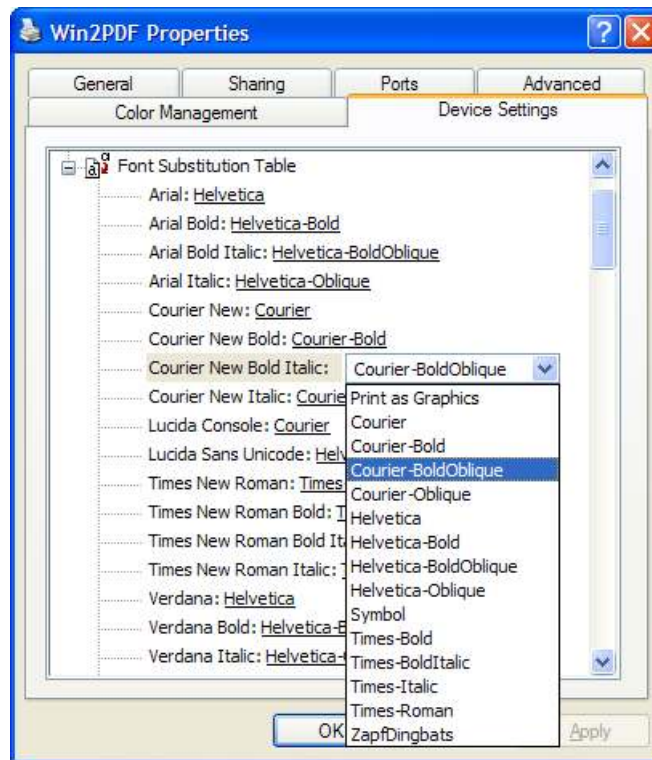
Win2PDF supports the 14 fonts that are built into Adobe Acrobat Reader®. These include:

- Courier
- **Courier-Bold**
- *Courier-Oblique*
- ***Courier-BoldOblique***
- Helvetica
- **Helvetica-Bold**
- *Helvetica-Oblique*
- ***Helvetica-BoldOblique***
- Times-Roman
- **Times-Bold**
- *Times-Italic*
- ***Times-BoldItalic***
- Σψμβολ (Symbol)
- ZapfDingbats

TrueType fonts can be configured to be substituted with one of the supported fonts, printed as graphics, or embedded in the PDF file if the "Win2PDF Font Helper" application is installed. To configure the TrueType font substitution:

Open the printers folder from **Start->Settings->Printers**.

1. Right click on the Win2PDF icon.
2. Select "**Properties**".
3. Select the "**Device Settings**" tab.
4. Click on the "**Font Substitution Table**" item.



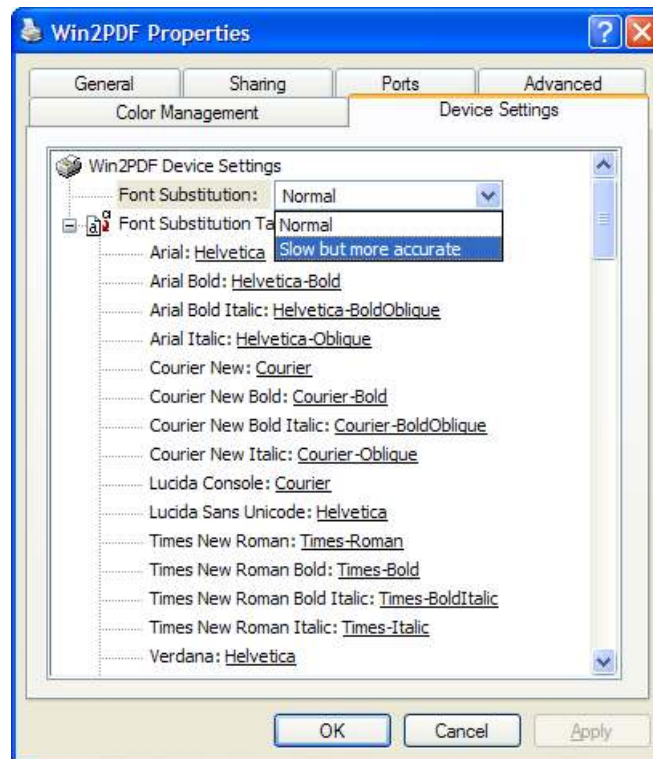
5. For each font, choose the substituted font or choose "**Print as Graphics**". If the "Win2PDF Font Helper" application is installed, an option labeled "**Embed Font**" will appear instead of "**Print as Graphics**".

TrueType fonts that use the symbol character set such as "Wingdings" are automatically printed as graphics. Printing fonts as graphics can significantly increase the size of the PDF file, so this feature should be used with care. Downloadable Type 1 Postscript fonts are not supported.

TrueType fonts that are printed as graphics can look more "**bold**" than the original font.

To improve the appearance of these fonts, you can change smoothing preferences in *Acrobat Reader 5.0* by opening the **Edit->Preferences->Display** dialog and enabling the "**smooth line art**" option. This option is not available in *Acrobat Reader 4.0*.

Win2PDF will automatically stretch or squeeze the substituted font to match the original font. In some types of documents, the PDF file may look better when each character is placed to match the original font. You can enable this by changing the "**Font Substitution**" from "**Normal**" to "**Slow but more accurate**". This option can improve the quality of documents that contain full justification.



Changing the font substitution to "**Slow but more accurate**" may increase the PDF file size.

2.5 Font Helper Application

The Win2PDF Font Helper is an optional, stand-alone application that can assist Win2PDF in embedding TrueType fonts in a PDF file. When TrueType fonts are embedded in the PDF file, they will always display the same regardless of the fonts available on the computer used to view the PDF file. Embedding TrueType fonts will increase the size of the PDF file.

The Win2PDF Font Helper application can be downloaded from the downloads section of the Win2PDF support web site. When you install the Win2PDF Font Helper application, it automatically configures Win2PDF to embed fonts that are not internally supported by Adobe Reader. You can manually configure which fonts are embedded and substituted in the font substitution table. The Font Helper application is only supported in Win2PDF version 2.85 or higher. The Font Helper changes the way that the PDF file is created, and may help other graphics related problems in PDF files. Only Western character sets are currently supported by the Font Helper.

The Font Helper application can be uninstalled from the Control Panel "Add/Remove Programs". Win2PDF will continue to work if the Font Helper application is uninstalled, but the "Embed Font" option will not be available in the font substitution table.

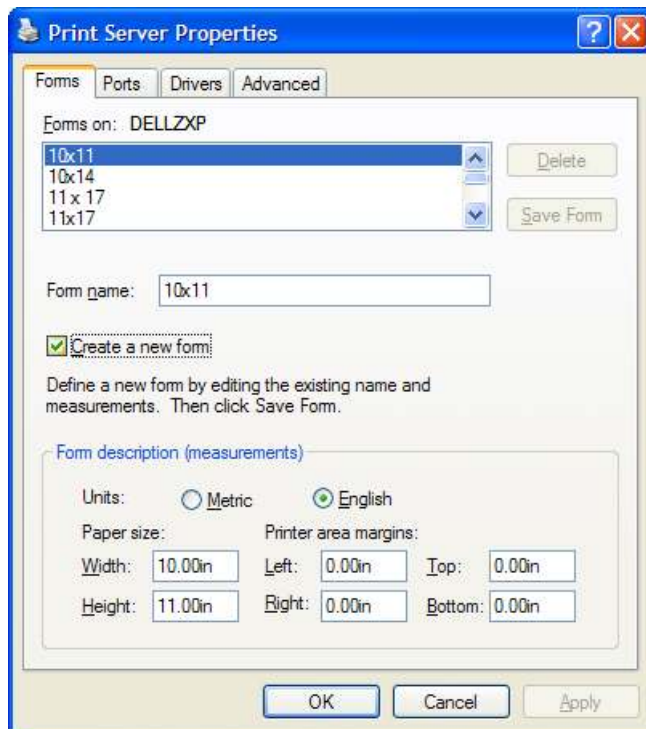
2.6 Paper Sizes

Win2PDF supports the following paper sizes:

- US Letter
- US Legal
- 4A0
- 2A0
- A0
- A1
- A2
- A3
- A4
- B5
- US Letter Small
- A4 Small
- US Legal Small
- Tabloid 11x17in.
- A-Size 8.5x11in.
- B-Size 11x17in.
- C-Size 17x22in.
- D-Size 22x34in.
- E-Size 34x44in.
- Arch-A 9x12in.
- Arch-B 12x18in.
- Arch-C 18x24in.
- Arch-D 24x36in.
- Arch-E 36x48in.

In addition, Win2PDF supports user defined custom page sizes. To create a custom page size:

1. Open the printers folder
2. Under the "**File**" menu, select "**Server Properties**".
3. Select the "**Forms**" tab.



4. Check the "**Create a New Form**" box, and fill out the "**Form Description**" and "**Paper Size**" fields. It is best to leave the "**Printer Area Margins**" fields as 0.
5. Select "Save Form" and close the dialog. Your form should now be available to Win2PDF.

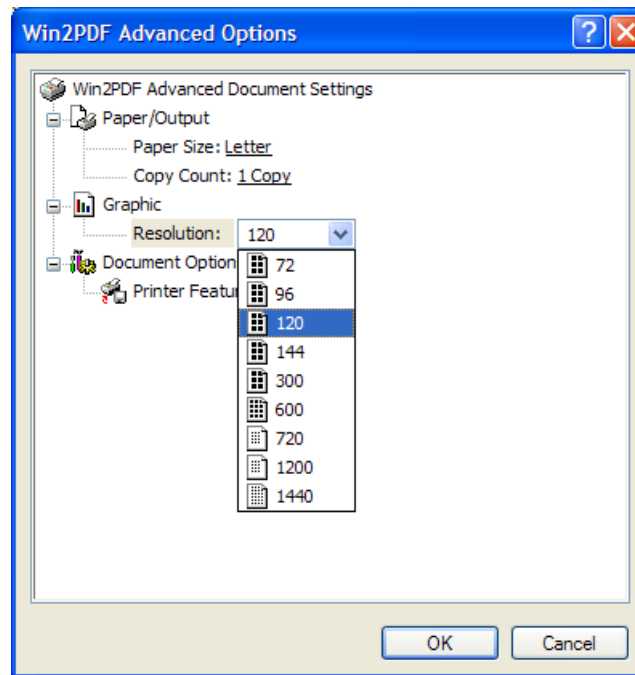
2.7 Application Settings Vs. Default Settings

Many applications have the ability to change the printer settings from the print dialog or from a page setup dialog. If you change a setting from an application, it will not change the default setting.

To change the default printer setting, you need to change the setting in the "**Printing Preferences**" (Windows 2000,XP) or "**Document Defaults**" (Windows NT) dialogs. You can find these dialogs by opening the printers folder, right clicking on the "Win2PDF" icon, and choosing "**Printing Preferences**" or "**Document Defaults**".

2.8 Resolution

The default resolution for bitmaps is 120 DPI. You can change the default resolution by opening the printers folder, right clicking on the Win2PDF icon, and opening "**Printing Preferences**" (Windows 2000,XP) or "**Document Defaults**" (Windows NT). The resolution setting is under the "Advanced" section of this dialog.



Increasing the resolution will improve the quality of bitmap images, but it will also increase the PDF file size.

2.9 Sending PDF files to a PDA

PDF files created with Win2PDF can be viewed on any type of computer that has a PDF viewer including PalmOS and Pocket PC devices.

The "**send to palm**" option in the Win2PDF file save dialog launches Acrobat Reader for PalmOS which converts the PDF file to a format that is readable by the PalmOS. The converted file is automatically downloaded to the Palm when you synchronize. The location of the converted file is controlled by Acrobat Reader for PalmOS, and the original PDF file remains intact.

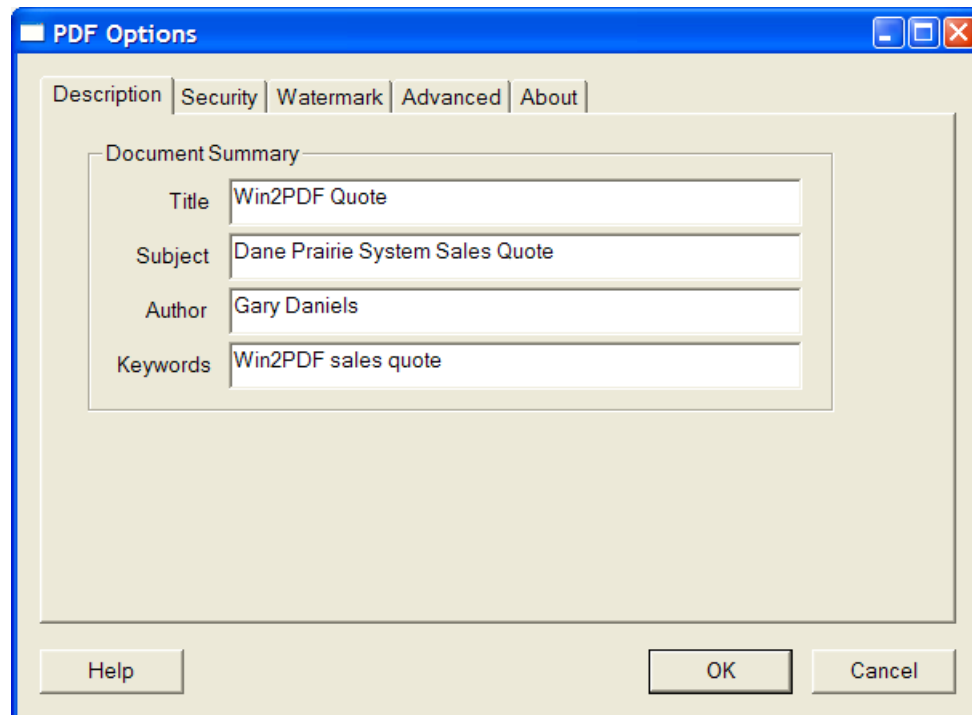
Acrobat Reader for the Pocket PC does not have the same synchronization options, but you can easily download PDF files to a Pocket PC device by enabling file synchronization. This will create a folder on your Windows desktop (e.g. "**Pocket_PC My Documents**"). To download a PDF file, just save the PDF file to the file synchronization folder and synchronize your Pocket PC.

Acrobat Reader for PalmOS and Pocket PC devices uses "tagged" PDF files so that the files can be reformatted for the smaller screens. Win2PDF does not support creating "tagged" PDF files, but Acrobat Reader for PalmOS and Pocket PC will automatically convert the PDF files to a tagged format when they are downloaded.

2.10 Win2PDF Pro Settings

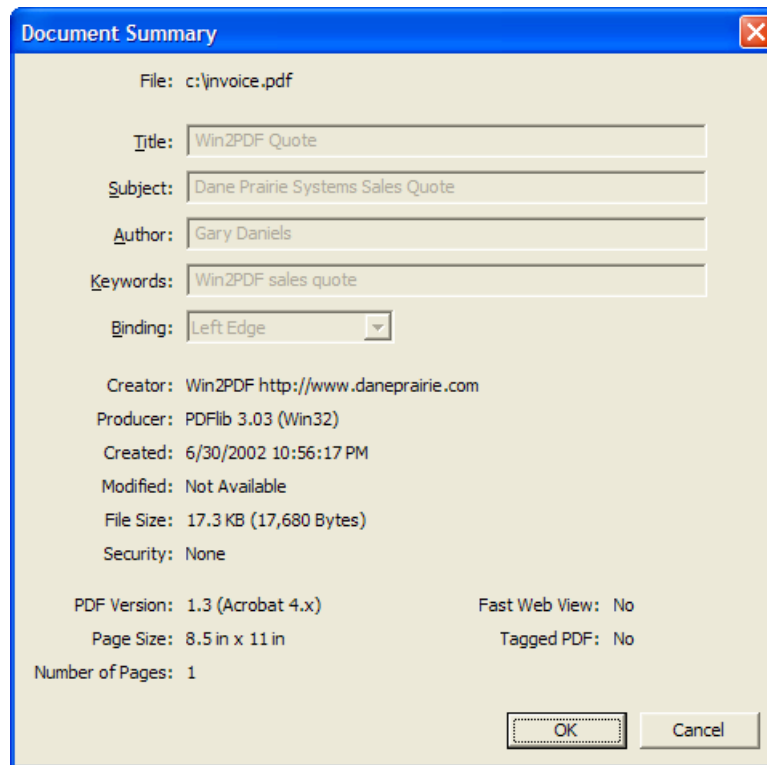
2.10.1 Document Information

Win2PDF Pro can set the document information such as Title, Author, Subject, and Keywords. This information is entered in the "**PDF Options...**" dialog of the Win2PDF File Save dialog.



The "**Author**" and "**Keywords**" fields are saved by Win2PDF and applied to all subsequent documents. The default value for the "**Title**" field is set by the application. The "**Subject**" field is not saved for future documents, and must be manually set for each document.

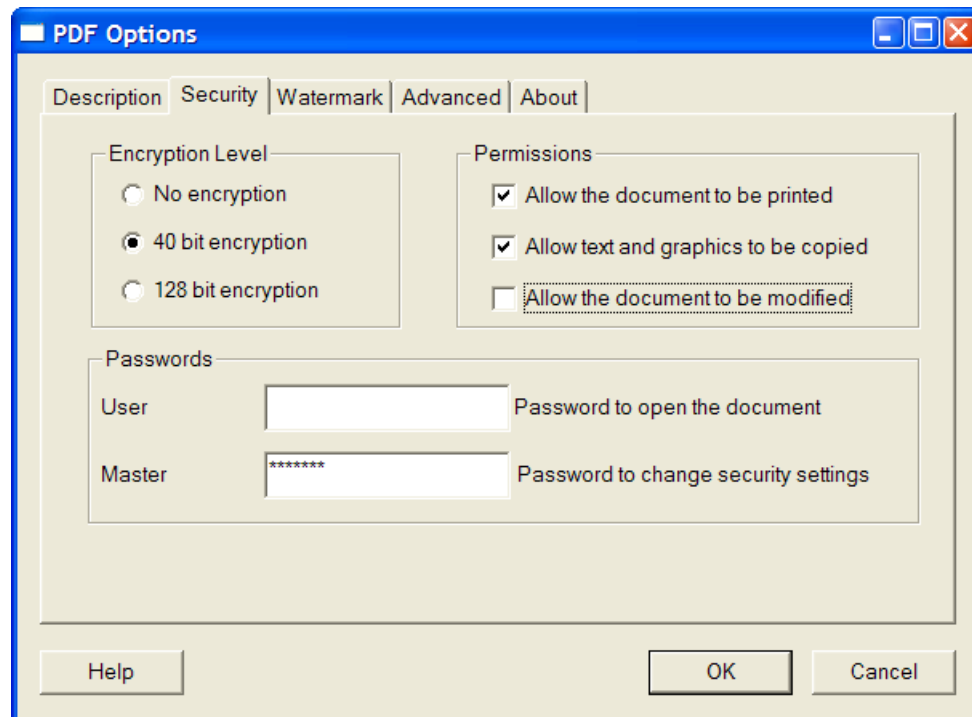
The document information can be viewed in Acrobat Reader by opening **File->Document Properties->Summary**



Information on controlling the document information from a custom application is available in "Setting Document Information" in the developer information section.

2.10.2 Document Security

Win2PDF Pro supports the standard security options and permissions available in the PDF file format.



The "**Encryption Level**" setting controls the type of encryption used in the PDF file. The 40 bit encryption is compatible with Acrobat Reader 4.0 and above and the 128 bit encryption is compatible with Acrobat Reader 5.0 and above. For best security, the 128 bit encryption option is recommended.

The "**Permissions**" setting controls restrictions that can be placed on the PDF file. To prevent printing of a PDF file, uncheck the "**Allow the document to be printed**" option. To prevent the text and graphics from being copied from the PDF file, uncheck the "**Allow text and graphics to be copied**" option. To prevent the document from being modified in a PDF editor, uncheck the "**Allow the document to be modified**" option.

The PDF file format allows two types of passwords, a user password and a master password. The user password is used to open the document, and the master password is used to encrypt the security options. When a user password is set, Acrobat Reader displays the following prompt when you open the PDF file.



You must always enter a master password when security options are enabled. It is recommended that passwords be at least 8 characters long and contain at least 1 number.

The password and permissions options are only available when the "**Encryption Level**"

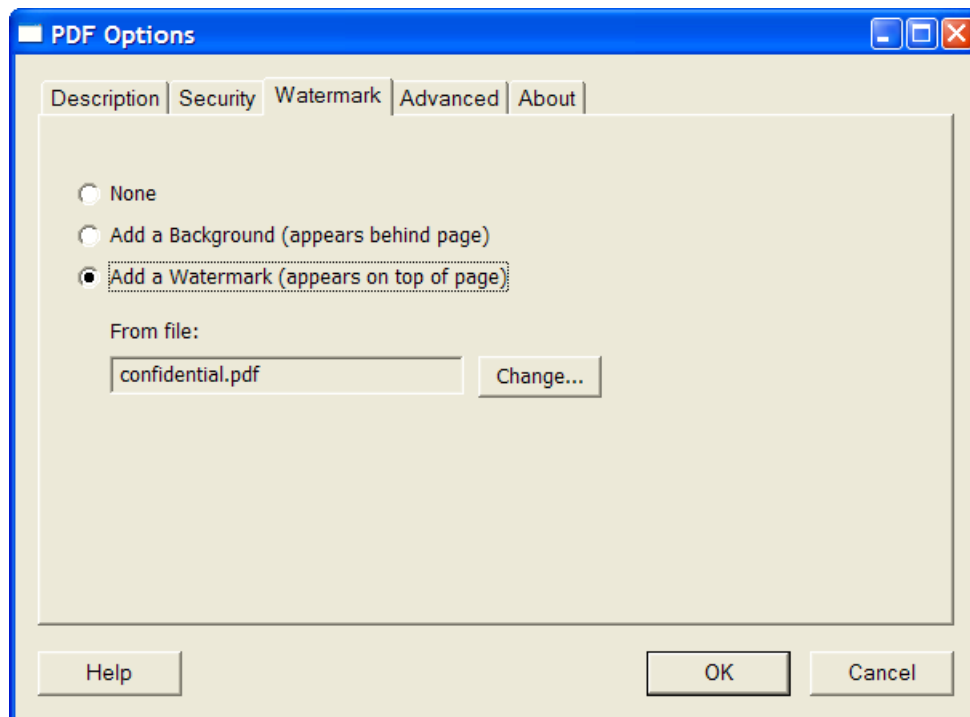
is set to 40 or 128 bit encryption.

Information on controlling the encryption options from a custom application is available in "controlling encryption options" in the developer information section.

An administrator can disable or change the default value for any of the security settings using the "**Win2PDF Admin Utility**" available for download at:
http://win2pdf.corphelp.net/?_a=downloads

2.10.3 Applying a watermark

Win2PDF Pro can overlay an existing PDF file on newly created PDF files (Add a Watermark) or place an existing PDF file behind text and graphics on newly created PDF files (Add a Background). The existing watermark or background PDF file can contain any text or graphics, but it is most often used to apply a "confidential" or "draft" stamp on each page of a document. To enable the watermark or background feature, select the "Add a Watermark" or "Add a Background" option in the Win2PDF "PDF Options" dialog.



When the watermark or background options are enabled, a text box containing the name of the current watermark or background PDF file is shown below the options. If you would like to change the file, click the "Change..." button and select a new watermark or background PDF file. Win2PDF will always display the last used watermark or background PDF file when the feature is enabled.

If the watermark or background PDF file contains more than one page, only the first page will be applied to each page of the new document. It's best to use a watermark or background PDF file that has the same page size as the newly created PDF file. If the watermark or background file has a different page size, it will be scaled and centered on

the page of the newly created PDF file.

You can create the watermark or background PDF file using Win2PDF and any Windows application such as Microsoft Word. If you are using Win2PDF Pro, the watermark or background PDF file must not be encrypted. Some sample watermark and background PDF files and the corresponding Word documents are available on the download section of the support web site at:

<http://www.win2pdf.com/download/download.htm>

Information on controlling the watermark options from a custom application is available in "watermark options" in the developer information section.

An administrator can disable or set a default watermark PDF file for all users with the "**Win2PDF Admin Utility**" available for download at:

<http://www.win2pdf.com/download/download.htm>

2.11 Application Notes

2.11.1 Microsoft Word

Print to the Win2PDF printer as normal. Do **not** check the "**print to file**" check box in the Microsoft Word print dialog.

Win2PDF cannot convert the Word document table of contents to PDF bookmarks. Win2PDF can convert URLs beginning with "http" or "www" to PDF hyperlinks, but it cannot convert embedded hyperlinks to PDF hyperlinks.

2.11.2 Microsoft Excel

If you are creating a PDF file from an Excel workbook that contains multiple worksheets, selecting the "**Entire workbook**" option from the Excel print dialog will create a separate PDF file for each worksheet. If you would like to have all worksheets in a single PDF file, you can select multiple worksheets before printing to the Win2PDF printer.

You can select multiple worksheets by holding down the "shift" or "control" key while clicking on the sheet tab. Select the "**Print...**" command from the "**File**" menu and make sure "**Active sheet(s)**" is enabled in the Excel print dialog. More information on selecting multiple worksheets is available at:

<http://office.microsoft.com/en-us/assistance/HP052024921033.aspx>

Alternatively, if you select "**print to file**" from the Excel print dialog all worksheets will be created in a single PDF file.

2.11.3 AutoCad

In AutoCAD 2002, plot to a PDF as follows :

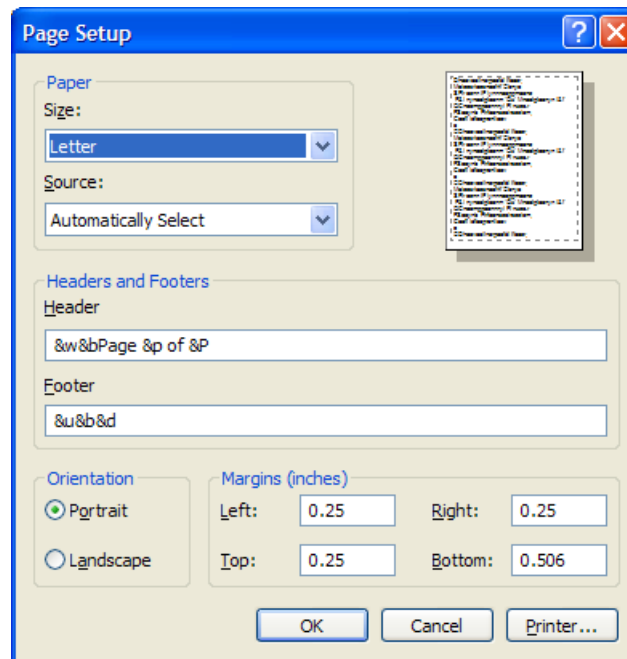
Command '**PLOT**'.

- Select '**Plot Device**' Tab.

- In the '**Plotter Configuration**' frame, click the '**Properties...**' button.
- A new dialog box opens.
- Select '**Device and Document Settings**' tab.
- If necessary highlight '**Custom Properties**' in the tree.
- Click the '**Custom Properties**' button.
- A new dialog box opens.
- Select the '**Paper Orientation**' (Note A).
- Click the '**Advanced...**' button.
- A new dialog box opens.
- Highlight '**Paper Size**' in the tree.
- Select the paper size from the drop-down list. This is an important step. (Note B)
- Click '**OK**' 3 times to close the dialog boxes and save to a .pc3 file if necessary.
- Back in the AutoCAD plot dialog, select the '**Plot Settings**' tab. In the '**Paper Size...**' frame the paper size should have changed to the value set earlier at (Note B). Do **not** change the paper size here as this may produce inconsistent rotations, sizes and offsets. In the '**Drawing Orientation**' frame select '**Portrait**' or '**Landscape**'. Note that this orientation selection overrides orientations that were set at (Note A) or (Note B).
- Click '**OK**' to plot.

2.11.4 Internet Explorer

Win2PDF can convert web pages to PDF files by printing them in Internet Explorer. By default, Internet Explorer prints the web page title and the page number at the top of each page and the web page URL at the bottom of each page. You can change these settings in the Internet Explorer page setup dialog.



The available options for the Internet Explorer header and footer follow.

Provides a space for you to type header text that will appear at the top of the page, or footer text that will appear at the bottom of the page.

To print specific information as part of the header or footer, include the following characters as part of the text.

Type this	To print this
&w	Window title
&u	Page address (URL)
&d	Date in short format (as specified by Regional Settings in Control Panel)
&D	Date in long format (as specified by Regional Settings in Control Panel)
&t	Time in the format specified by Regional Settings in Control Panel
&T	Time in 24-hour format
&p	Current page number
&P	Total number of pages
&&	A single ampersand (&)
&b	The text immediately following these characters as centered.
&b&b	The text immediately following the first "&b" as centered, and the text following the second "&b" as right-justified.

Part



3 Purchasing Win2PDF

3.1 Online

You can [purchase Win2PDF online](http://www.win2pdf.com) at the <http://www.win2pdf.com> web site. We accept all major credit cards (Visa, MasterCard, American Express, Discover, Diners Club) and use secure credit card processing services provided by Digital River.



Digital River also accepts checks, and credit card payment by fax or telephone.

After you have purchased Win2PDF, you will receive an e-mail receipt containing a registration code. You enter this registration code as described in "[Registering Win2PDF](#)" to remove the extra page from each document.

If you are purchasing Win2PDF Pro, you will receive a link to download the Win2PDF Pro setup program as part of your e-mail receipt.

3.2 Purchase Orders

Purchase orders can be faxed to (612) 435-4926.

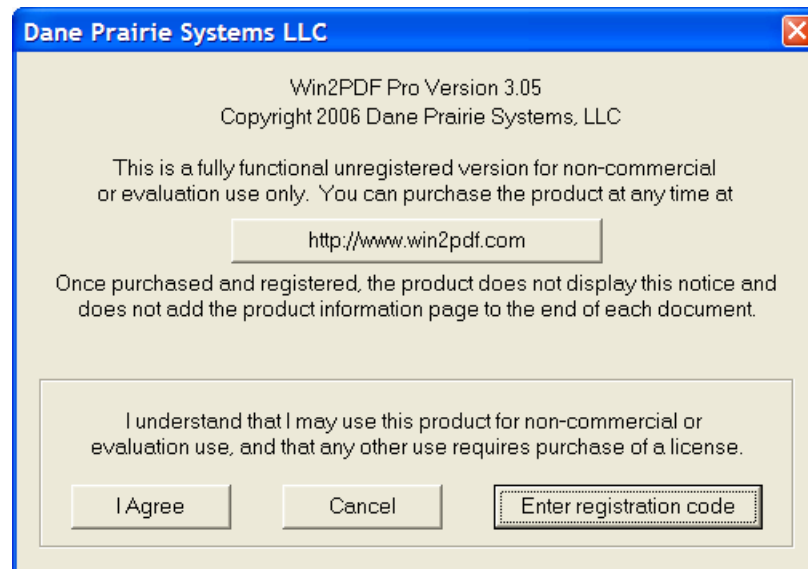
For sales inquiries, send e-mail to sales@win2pdf.com

Our mailing address is:

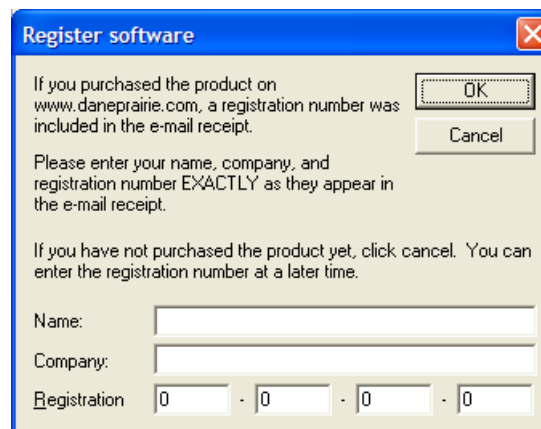
Dane Prairie Systems, LLC
P.O. Box 24491
Minneapolis, MN, USA 55424-0491

3.3 Registering Win2PDF

After you have received a registration code through e-mail, you can register Win2PDF by running "**Start->Programs->Win2PDF->Enter Win2PDF License**". The following dialog will appear.



Click on the "**Enter registration code**" button, and enter your name, company, and registration code exactly as they are listed in your e-mail receipt.



If you entered the information correctly, you should see a success message as follows.



The PDF documents created by Win2PDF will no longer include the trailer page on each document.

Part



4 Frequently Asked Questions

4.1 Win2PDF FAQ on the Internet

The latest [Win2PDF frequently asked questions](#) list is available on the win2pdf.com web site. If your question is not answered here, you may [submit](#) a question from this site.

4.2 Does Win2PDF support Windows 95/98/ME?

Win2PDF does not support Windows 95/98/ME.

Win2PDF installs as a print driver, and this print driver only works with Windows NT, Windows 2000, and Windows XP, Microsoft's replacement for Windows ME.

4.3 What type of fonts does Win2PDF support?

Win2PDF supports the 14 fonts that are built into Adobe Acrobat Reader®. These include:

- Courier
- **Courier-Bold**
- *Courier-Oblique*
- ***Courier-BoldOblique***
- Helvetica
- **Helvetica-Bold**
- *Helvetica-Oblique*
- ***Helvetica-BoldOblique***
- Times-Roman
- **Times-Bold**
- *Times-Italic*
- ***Times-BoldItalic***
- Symbol
- ZapfDingbats

TrueType fonts can be configured to be substituted with one of the supported fonts, printed as graphics, or embedded if the Win2PDF Font Helper application is installed. The "Fonts" section of "Using Win2PDF" describes how to configure font substitution.

4.4 I'm a noncommercial user. How do I remove the extra page from each document?

Win2PDF is free for noncommercial use, but you must purchase the software to remove the extra page from each document.

4.5 How can I control the PDF file name without prompting?

There are three options:

- If the output PDF file can always have the same name, you can create a Windows port that specifies the name. To create a file name port:

1. Open the printers folder under **Start>Settings>Printers**.
2. Right click on Win2PDF and select "**Properties**".
3. Select the "**Ports**" tab.
4. Click on the "**Add Port...**" button.
5. Under "**Available Printer Ports**" select "**Local Port**" and then click the "**New Port**" button.
6. Under "**Enter a port name:**" type in the full path name to the PDF file that you would like to be created. For example, you could type "c:\my.pdf" Click **OK**.
7. You should be back at the "**Ports**" tab of the "**Properties**" dialog. The file name that you entered in step 6 should display under "port." Click the check box for the port filename, and then click "**OK**" or "**Apply**".

Printing to Win2PDF will now create a PDF file using the name that you picked without prompting.

- You can use the registry as documented in the "Developer Information" section under "Specifying an output file name".
- You can use the Win32 API as documented in the "Developer Information" section under "Windows Printer Interface".

4.6 Does Win2PDF support user defined page sizes? How can I add a custom page size to Win2PDF?

The "Paper Sizes" section of "Using Win2PDF" describes how to add a custom page size.

4.7 Does Win2PDF support compression?

Yes. Win2PDF supports "flate" compression of all page objects and "JPEG" compression for color bitmaps.

4.8 How can I improve the quality of bitmap images?

You can increase the default resolution to improve the quality of bitmap images. To do this, open the printers folder, right click on the Win2PDF icon, and select "Document Defaults" (Windows NT) or "Printing Preferences" (Windows 2000/XP). You can increase the default resolution under the "Advanced" tab to improve the bitmap quality but this will also increase the PDF file size.

For more information, see "Resolution".

4.9 Does Win2PDF create PDF files that are optimized for web downloading?

PDF files created with Win2PDF can be used on web pages, but they are not linearized PDF files.

4.10 Does Win2PDF support bookmarks?

This feature is not supported by Win2PDF, but is under consideration for future versions of the product.

4.11 Can Win2PDF be used on a web server?

Usage on a server requires a server license of Win2PDF. For an example of Win2PDF on a web server, see the demo from the North Coast Idea Company at <http://www.ncidea.com/w4form.asp>. Information on using a printer from a web server from the Microsoft knowledge base is at:

<http://support.microsoft.com/support/kb/articles/q184/2/91.asp>

4.12 Is it possible to print multiple worksheets in a single Excel workbook to a single .pdf file?

Select the worksheets that you want to print by holding down the "shift" or "control" key while clicking on the sheet tab. Select the "**Print...**" command from the "**File**" menu and make sure "**Active sheet(s)**" is enabled in the Excel print dialog. More information on selecting multiple worksheets is available at:

<http://office.microsoft.com/en-us/assistance/HP052024921033.aspx>

Alternatively, if you select "**print to file**" from the Excel print dialog all worksheets will be created in a single PDF file.

4.13 Does Win2PDF support Asian character sets?

Asian characters are supported but are rendered using the "print as graphics" feature of Win2PDF.

4.14 Is it legal to create PDF files with Win2PDF?

Yes. Adobe Systems Inc. created the PDF file format and owns the copyrights on the data structures, operators, and written specification for PDF. Adobe wishes to make PDF an open standard, so they have given permission to anyone to write software that creates PDF files. They have also given royalty free licenses to the patents if used to create PDF files. Information on this policy is in section 1.7 of the [PDF specification](#) published by Adobe, and also at http://partners.adobe.com/public/developer/support/topic_legal_notices.html.

4.15 Can Win2PDF append to an existing PDF file?

Yes, see "Merging to an existing PDF file".

4.16 When installing Win2PDF, I'm get the error message "AddPrinter error 126."

This error can occur if either of the following conditions is true:

- The %SYSTEMROOT%\System32\Wbem\framedyn.dll file is missing or damaged.
- or-
- The Windows Path environment variable does not point to the %SYSTEMROOT%\System32\Wbem folder.

To correct the problem, use one of the following methods:

Run the Windows system file checker

The Windows system file checker will scan all protected Windows files and verify their versions. If it detects any files that have been replaced or damaged, it will repair the files. To run the system file checker:

1. Click **Start**, and then click **Run**.
2. In the **Open** box, type **sfc /scannow** and then click **OK**.

More information on the Windows system file checker is available at the following location:

<http://support.microsoft.com/?kbid=310747>

Replace the Framedyn.dll File

1. Click **Start**, and then click **Run**.
2. In the **Open** box, type **%systemroot%\system32\dllcache**, and then click **OK**.
3. Right-click **framedyn.dll**, and then click **Copy** on the shortcut menu that appears.
4. Click **Start**, and then click **Run**.
5. In the **Open** box, type **%systemroot%\system32\wbem**, and then click **OK**.
6. On the **Edit** menu, click **Paste**. If you are prompted to replace the existing file, click **Yes**.

Verify System Variables

1. Click **Start**, right-click **My Computer**, and then click **Properties** on the shortcut menu that appears. If you receive the following error message, click **OK**:
rundll32.exe - Unable To Locate Component This application has failed to start because framedyn.dll was not found. Re-installing the application may fix this problem.
2. In the **System Properties** dialog box, click the **Advanced** tab.
3. Click **Environment Variables**.
4. Under **System variables**, click **Path**, and then click **Edit**. **NOTE:** If no **Path** variable is listed, click **New**. In the **Variable name** box, type **Path**.
5. In the **Variable value** box, type the following: **%SystemRoot%\system32;%SystemRoot%;%SystemRoot%\System32\wbem**
6. Click **OK** three times (each time that you have the option).

More information on this problem is at the following location:

<http://support.microsoft.com/default.aspx?scid=kb;en-us;319114>

Part



5 Developer Information

5.1 Windows Printer Interface

Win2PDF interfaces with an application using standard Windows printer APIs. Whenever possible, Win2PDF uses standard Windows APIs instead of defining new interfaces.

If you are a software developer and are developing an application that uses Win2PDF, you can also control the output filename using the standard Win32 API. To specify the file name you need to use the Microsoft defined **DOCINFO** structure and the **StartDoc** function. Set the **lpszOutput** field of the **DOCINFO** structure to the fully qualified path name of the file, and then pass the **DOCINFO** structure to the **Win32 StartDoc** function. Using this method, each file can be created using a unique name.

You can control the orientation, resolution, and other settings using the Win32 API and the **DEVMODE** structure as defined in the Microsoft Platform SDK. The Microsoft Knowledgebase article Q167345 available at:

<http://support.microsoft.com/default.aspx?scid=kb;EN-US;Q167345>
describes how to change printer settings using the Win32 API.

5.2 Using the registry

5.2.1 Registry Overview

Win2PDF looks for registry values at the following locations and in the following order:

```
"HKEY_CURRENT_USER\Software\VB and VBA Program Settings\Dane Prairie Systems
\Win2PDF"
"HKEY_CURRENT_USER\Software\Dane Prairie Systems\Win2PDF" and
"HKEY_LOCAL_MACHINE\Software\Dane Prairie Systems\Win2PDF"
```

The first registry location is used for the Visual Basic "**SaveSetting**" function. From Visual Basic, you can call **SaveSetting** with the following parameters to control Win2PDF:

```
SaveSetting "Dane Prairie Systems", "Win2PDF", Value Name, Value
```

Where "**ValueName**" and "**Value**" will depend on the Win2PDF setting to control. The **SaveSetting** command only works with Win2PDF registry settings that use a string type.

The HKEY_CURRENT_USER registry location is useful if you want the setting to apply only to the current user. This is especially important when using Win2PDF in a multi-user environment such as Windows Terminal Services.

The HKEY_LOCAL_MACHINE location is useful if you want the setting to apply to all users, or if your application is only going to be used with a single user.

After the PDF file is created, the registry value will be deleted by Win2PDF. If you would like the setting to apply to all documents without having to add the registry value for each document, you can create a non-zero registry value named "**persistent**" to one of the locations listed above. This will prevent Win2PDF from deleting the value after each document.

The following Win2PDF settings can be controlled from the registry:

<u>Value Name</u>	<u>Ty pe</u>	<u>Description</u>
PDFFileName	Str	Controls the output file name
PDFPostFileName	Str	Same as PDFFileName, but is deleted after the document has been created
persistent	Dw	Prevents registry values from being deleted when it is set to a non-zero value
PDFTitle	Str	Sets the document title
PDFAuthor	Str	Sets the document author
PDFSubject	Str	Sets the document subject
PDFKeywords	Str	Sets the document keywords
file options	Dw	Enables encryption, e-mail, view, and print PDF options
disabled options	Dw	Disables options from the file save dialog
Post Action	Str	Automatically executes the application specified after PDF creation.
user password	Str	Sets the user password (Win2PDF Pro)
master password	Str	Sets the master password (Win2PDF Pro)
PDFMailRecipients	Str	Sets the email "To:" recipient addresses when the "Send PDF" option is enabled
PDFMailCCRecipients	Str	Sets the email "CC:" recipient addresses when the "Send PDF" option is enabled
PDFMailSubject	Str	Sets the email subject when the "Send PDF" option is enabled
PDFMailNote	Str	Sets the email body text when the "Send PDF" option is enabled
PDFMailResolveNames	Str	Verifies email addresses using the default address book
PDFWatermarkFile	Str	Sets the watermark PDF file
PDFDefaultWatermarkFile	Str	Sets the default watermark PDF file for all users.

PDFExclude Dw Prevents the watermark from being applied to the first number of WatermarkPrord pages of a document.

e

PDFExclude Dw Prevents the watermark from being applied to the last number of WatermarkP ord pages of a document.

ost

If you create the any of the string registry values as a REG_EXPAND_SZ instead of a REG_SZ type, the value will be expanded from environment variables. The environment variables are specified with "%" characters at the beginning and end of the variables as in "%HOMEPATH%". The REG_EXPAND_SZ option is not available from the Visual Basic SaveSetting command. The %DATE% and %TIME% environment variables are not expanded by this option.

The registry methods are not safe when used with programs that have multiple threads or multiple processes that access Win2PDF. For these types of programs, you need to ensure that only one thread or process has access to Win2PDF at a time by using a Windows critical section or mutex. The Windows printer interfaces do not have these limitations.

When multiple instances of Win2PDF are installed, Win2PDF first looks in the registry locations based on the instance name of Win2PDF. This allows separate settings for different instance of Win2PDF. For example, if the current instance of Win2PDF is named "Win2PDF (Copy 1)" the following registry locations would be checked before the standard registry locations:

```
"HKEY_CURRENT_USER\Software\VB and VBA Program Settings\Dane Prairie Systems
\Win2PDF (Copy 1)"
"HKEY_CURRENT_USER\Software\Dane Prairie Systems\Win2PDF (Copy 1)" and
"HKEY_LOCAL_MACHINE\Software\Dane Prairie Systems\Win2PDF (Copy 1)"
```

If a setting doesn't exist under the instance name section of the registry, then Win2PDF checks the standard locations.

5.2.2 Specifying an output file name

In addition to being able to control the output file using the Win32 API, you can control the output file name by creating a string value in the registry at any of the standard registry locations. The "**PDFFileName**" value should be set to the full path name of the PDF file. If the "**PDFFileName**" entry does not exist in the registry, the user will be prompted to enter a file name.

From Visual Basic, you can set the output file name using the following code sample:

```
SaveSetting "Dane Prairie Systems", "Win2PDF", "PDFFileName", filename
```

Where the filename parameter is the full path name for the PDF file. By default, the "**PDFFileName**" entry is removed from the registry after each PDF file is created and you must add the "**PDFFileName**" each time you print. If you want to prevent the "**PDFFileName**" from being removed after each document, you can create a DWord value named "**persistent**" at one of the standard registry locations.

If a PDF file already exists at the location specified by "**PDFFileName**", it will be

overwritten. If you want to prevent files from being overwritten, you can add a single asterisk character "*" to the file name to specify a wildcard. If a wildcard character exists, it will be replaced by a sequential number so that PDF files are never overwritten.

If you want to create a unique PDF file name, you can use a single "%" character in the file name. The "%" character will be expanded to include a sequence of numbers based on the current date and time.

If you create the "PDFFileName" registry value as a REG_EXPAND_SZ instead of a REG_SZ type, the file name will be expanded from environment variables. The environment variables are specified with "%" characters at the beginning and end of the variables as in "%HOMEPATH%". If the environment variable does not exist, the first "%" character will be expanded by a sequence of numbers based on the date and time as described previously. The REG_EXPAND_SZ option is not available from the Visual Basic SaveSetting command. The %DATE% and %TIME% environment variables are not expanded by this option.

Win2PDF sets the current PDF document title in an environment variable named "**PDFTitle**". You can use this in combination with a REG_EXPAND_SZ environment variable to set the file name to the document title. For example, if a "**PDFFileName**" entry with a REG_EXPAND_SZ type is set to "c:\%PDFTitle%*.pdf", Win2PDF will create a PDF file using the document specified title without displaying a file save dialog and it will never overwrite an existing file.

If the application needs to determine when Win2PDF has finished creating the PDF file, it can use "**PDFPostFileName**" instead of "**PDFFileName**". The behavior of "**PDFPostFileName**" is identical to "**PDFFileName**" except the registry value is not deleted by Win2PDF until the PDF file has been created. The application can monitor the existence of this registry value to determine if Win2PDF is still processing the PDF file.

5.2.3 Merge Options

You can prepend or append an existing file with the newly created file by creating a string value in the registry at any of the standard registry locations. If you would like to add an existing PDF file to the beginning of the newly created file, you can create a string value named "**PDFPrependFile**" and set it to the full path of the existing PDF file. If you would like to append an existing PDF file to the newly created file, you can create a string value named "**PDFAppendFile**" and set it to the full path of the existing PDF file. You can specify both a "**PDFPrependFile**" and a "**PDFAppendFile**" at the same time, and both options are only used if the output file name was specified by using "**PDFFileName**".

For example, if you have an existing PDF file named "file1.pdf" and you would like to create a new PDF file named "file2.pdf" with the contents of "file1.pdf" at the beginning of the new file, you would set "**PDFPrependFile**" to file1.pdf and "**PDFFileName**" to "file2.pdf". Alternatively, if you wanted the contents of "file1.pdf" to be at the end of the new file, you would set "**PDFAppendFile**" to "file1.pdf" and "**PDFFileName**" to "file2.pdf".

By default, the "**PDFPrependFile**" and "**PDFAppendFile**" entries are removed from the registry after each PDF file is created and you must add the values each time you print. If you want to prevent the values from being removed after each document, you can create a DWord value named "**persistent**" at one of the standard registry locations.

5.2.4 Setting Document Information

You can set the PDF document subject, title, author, and keywords by creating string values named **PDFSubject**, **PDFTitle**, **PDFAuthor**, and **PDFKeywords** in the registry at any of the standard registry locations. These are the same values as described in the Document Information. All values are deleted after each document is created unless the "**persistent**" registry value is set.

5.2.5 Enabling encryption, e-mail, view, and print PDF Options

You can create a **DWORD** value in the registry at any of the standard registry locations to control actions to be taken after the PDF file is created. The value is named "**file options**", and its value can be a combination of the following values:

Action	value	
Send email	0x01	
View PDF	0x02	
Send to palm	0x04	
Set 40 bit encryption	0x08	(Win2PDF Pro)
Set 128 bit encryption	0x10	(Win2PDF Pro)
Enable URL detection	0x20	
Delete email	0x40	
Print PDF	0x80	
Apply foreground watermark	0x200	(Win2PDF Pro)
Send email - no user interaction	0x400	(requires Win2PDF Mail Helper application)
Apply background watermark	0x800	(Win2PDF Pro)

The values can be added together, so if you wanted to send e-mail, enable URL detection, and delete the file after sending you would set "**file options**" to 0x61 hexadecimal. The 40 and 128 bit encryption options are only valid for Win2PDF Pro. All values are deleted after each document is created unless the "**persistent**" registry value is set.

5.2.6 Setting E-mail Options

When the "Send email" or "Send email - no user interaction" options are enabled, you can set the email address by creating a string value in one of the standard registry locations named "**PDFMailRecipients**". The value can be a single email address in the form "*someone@somedomain.com*", or multiple recipients separated by semicolon ';' or comma ',' characters. You can also set one or more "CC:" email addresses by setting a string value named "**PDFMailCCRecipients**" in one of the standard registry locations. Some email clients require a "SMTP:" string in front of the address such as "*SMTP:someone@somedomain.com*".

Win2PDF can verify the addresses using the default address book if a DWORD value named "**PDFMailResolveNames**" is set to 1 in one of the standard registry locations. This can improve the reliability of sent email, but may cause the email client to display a warning dialog.

You can set the e-mail subject field by creating a string value named "**PDFMailSubject**", and you can fill in the body text of the message by creating a string value named "**PDFMailNote**". All values are deleted after each document is created unless the "**persistent**" registry value is set.

Windows MAPI email clients such as Microsoft Outlook or Outlook Express will not let you send email without user interaction. The Win2PDF Mail Helper Application is an optional SMTP mail client that integrates with Win2PDF and supports sending email without user interaction.

5.2.7 Controlling Encryption Options

To set the security permissions, you can create a DWORD value named "security permissions" at any of the standard registry locations.

The DWORD value must be named "security permissions", and the value is defined by Adobe in the PDF specification available from: <http://partners.adobe.com/asn/tech/pdf/specifications.jsp>

The following table from this specification defines the privileges:

Bit Position	Meaning
1-2	Reserved; must be 0
3	Print document
4	Modify contents of document (other than text annotations and interactive form fields)
5	Copy text and graphics from document
6	Add or modify text annotations and interactive form fields
7-8	Reserved; must be 1
9	Fill in existing form fields
10	Extract text and graphics for Accessibility
11	Assemble the document
12	Allow high resolution printing
13-32	Reserved; must be 1

The default value is 0xffffffc. For example, to create a PDF document that doesn't allow printing you need to set bit position 3 to a 0 so you would set the "**security permissions**" to 0xfffff8.

The following table lists common combinations of security permissions:

Disable printing	0xffffffff8
Disable copying	0xfffffec
Disable modifying	0xfffff4
Disable printing & copying	0xffffe8
Disable printing & modifying	0xfffff0
Disable copying & modifying	0xffffe4
Disable printing & copying & modifying	0xffffe0

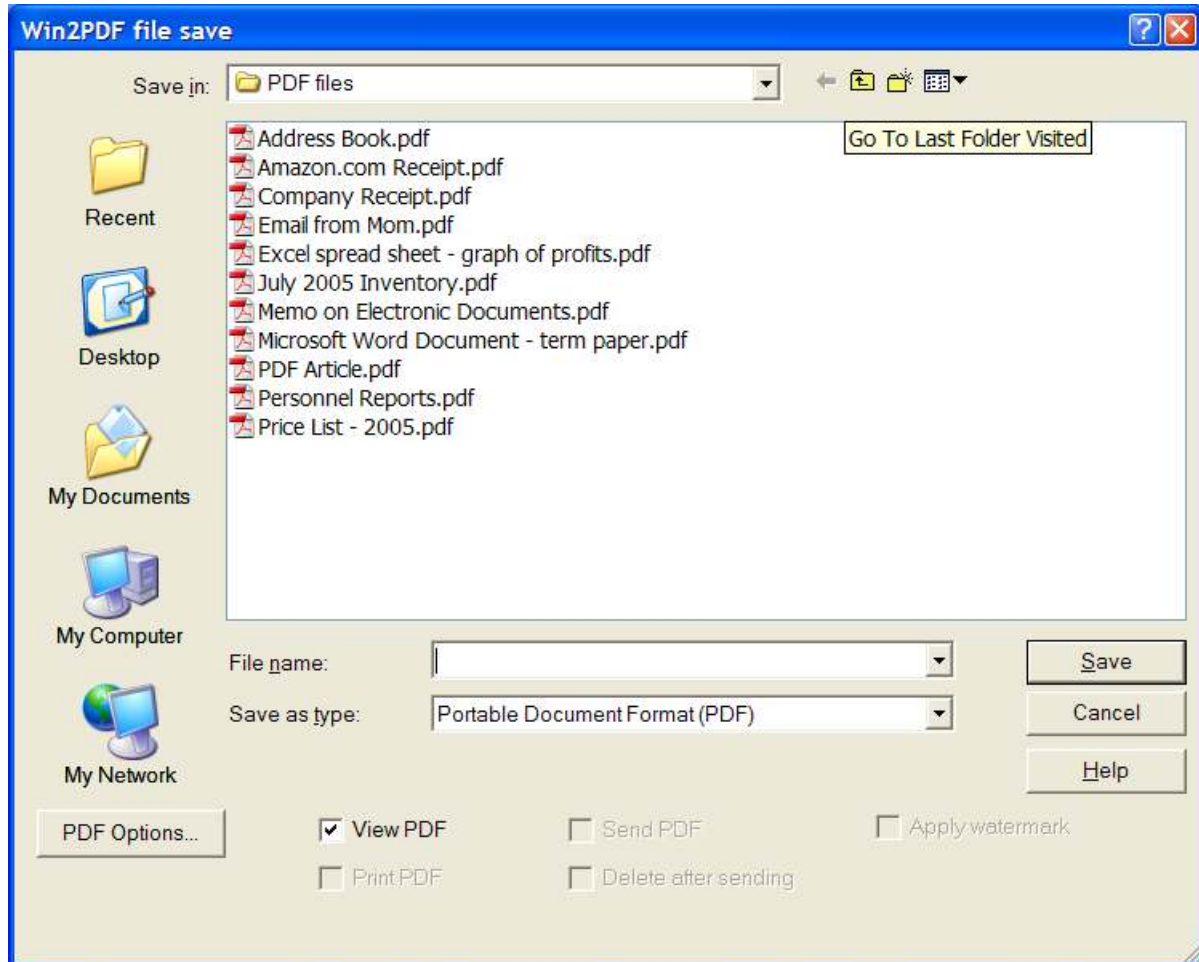
You can set passwords by creating **String** values named "**user password**" or "**master password**" to password protect documents. The passwords are only used if encryption is enabled in the "**file options**" setting. All registry values are deleted after each document unless the **persistent** value is set.

The security permissions and passwords are only valid for Win2PDF Pro.

5.2.8 Disabling File Save Options

The file save options such as "View PDF", "Print PDF", and "Send PDF" can be disabled by adding a DWORD value to the registry named "disabled options" at any of the standard registry locations. The options are specified using the same table as the "**file**

options". The values can be added together, so if you wanted to disable the "send PDF" and "delete after sending" options you would set "**disabled options**" to 0x41 hexadecimal.



All values are deleted after each document is created unless the "**persistent**" registry value is set.

5.2.9 Automatically Executing an Application

You can automatically execute an application after the PDF file is created by creating a string registry value named "**Post Action**" in any of the standard registry locations. The application must be specified using the full path name, and the PDF file can be passed to the application by using a "%s" in the command line. For example, setting "**Post Action**" to:

```
C:\Program Files\Adobe\Acrobat 6.0\Reader\acord32.exe "%s"
```

would launch Acrobat Reader after the PDF file is created. It is important to enclose the file name with quotation marks since the file may contain spaces. The registry value is deleted after each document unless the **persistent** value is set.

5.2.10 Watermark Options

When the "Apply foreground watermark" or "Apply background watermark" options are enabled, the watermark PDF file can be specified by setting a string value named "

PDFWatermarkFile" in the registry at any of the standard registry locations.

By default, the watermark is applied to all pages in the newly created document. If you want to exclude the watermark from being applied to the beginning of the document, you can set a DWORD value in the registry named "PDFExcludeWatermarkPre" to the number of pages to exclude. If you want to exclude the watermark from being applied to the end of the document, you can set a DWORD value in the registry named "PDFExcludeWatermarkPost" to the number of pages to exclude.

The registry value is deleted after each document is created unless the "**persistent**" registry value is set.

A default watermark for all users can be specified by setting a string value named "PDFDefaultWatermarkFile" at:

"HKEY_LOCAL_MACHINE\Software\Dane Prairie Systems\Win2PDF"

This registry setting is not deleted after each document.

5.2.11 Mail Helper Application

The Win2PDF Mail Helper application is an optional SMTP mail client that integrates with Win2PDF and supports sending email without user interaction. This application can be downloaded from the Win2PDF support download site at:

http://win2pdf.corphelp.net/?_a=downloads

To email without user interaction, you must have the Win2PDF Mail Helper application installed and configured, you must set the email recipient address, and you must enable the "Send email - no user interaction" option.

The Win2PDF Mail Helper uses SMTP to send email, and requires configuration to use an SMTP server. You can use the "Configure Win2PDF Mail Helper" menu option to interactively set the server settings, or you can use the following registry settings in any of the standard registry locations:

Value Name	Typ	Description
PDFMailFrom	String	Used to fill in the "from:" field in the email header.
PDFMailServerName	String	SMTP server name
PDFMailUserName	String	If authentication is used, the user name for the SMTP server.
PDFMailPassword	String	If authentication is used, the password for the SMTP server.
PDFMailAuthentication	1 if authentication is used by the SMTP server, 0 otherwise	

5.3 Programming Environments

5.3.1 Visual Basic 6.0

5.3.1.1 Using the Printer object

The Visual Basic printer object greatly simplifies sending output to a printer. The following is a very simple example of creating a PDF and specifying the output file name.

```
Private Sub Command1_Click()
    'set the output file name
    SaveSetting "Dane Prairie Systems", "Win2PDF", "PDFFileName", "c:\TEST.PDF"

    'output some text
    Printer.Print "hello world!"

    'save the PDF file
    Printer.EndDoc
End Sub
```

Win2PDF supports all of the standard Printer object methods and properties. A more advanced example requires some support routines for writing a Dword value to the registry. The following code must be added to the declarations section of the sample form.

```
Option Explicit

Private Const REG_DWORD As Long = 4
Private Const HKEY_CURRENT_USER = &H80000001
Private Const KEY_ALL_ACCESS = &H3F

Private Declare Function RegCloseKey Lib "advapi32.dll" _
    (ByVal hKey As Long) As Long
Private Declare Function RegOpenKeyEx Lib "advapi32.dll" Alias _
    "RegOpenKeyExA" (ByVal hKey As Long, ByVal lpSubKey As String, _
    ByVal ulOptions As Long, ByVal samDesired As Long, phkResult As _
    Long) As Long
Private Declare Function RegSetValueExLong Lib "advapi32.dll" Alias _
    "RegSetValueExA" (ByVal hKey As Long, ByVal lpValueName As String, _
    ByVal Reserved As Long, ByVal dwType As Long, lpValue As Long, _
    ByVal cbData As Long) As Long

Private Sub SaveWin2PDFDword(sValueName As String, lValueSetting As Long)
    Dim lRetVal As Long          'result of the SetValueExLong function
    Dim hKey As Long            'handle of open key

    lRetVal = RegOpenKeyEx(HKEY_CURRENT_USER, "Software\VB and VBA Program
Settings\Dane Prairie Systems\Win2PDF", 0, _
    KEY_ALL_ACCESS, hKey)
    lRetVal = RegSetValueExLong(hKey, sValueName, 0&, _
    REG_DWORD, lValueSetting, 4)

    RegCloseKey (hKey)
End Sub
```

Now we can use the subroutine to save a Dword value to the registry and enable 128 bit encryption. The encryption options are only valid for Win2PDF Pro.

```
Private Sub Command1_Click()
    'set the output file name
    SaveSetting "Dane Prairie Systems", "Win2PDF", "PDFFileName", "c:\TEST.PDF"
```

```
'enable 128 bit encryption (Win2PDF Pro only) and automatic url detection
SaveWin2PDFDword "file options", &H30

'set a master password
SaveSetting "Dane Prairie Systems", "Win2PDF", "master password",
"abracadabra"

'set the PDF document title
SaveSetting "Dane Prairie Systems", "Win2PDF", "PDFTitle", "Hello World
sample"

'set landscape orientation
Printer.Orientation = vbPRORLandscape

'output some text
Printer.Print "hello world!"
Printer.Print "www.win2pdf.com"

'save the PDF file
Printer.EndDoc
End Sub
```

The following example demonstrates how to append to an existing PDF file.

```
Private Sub Command2_Click()

'set the output file name to create original PDF file
SaveSetting "Dane Prairie Systems", "Win2PDF", "PDFFileName", "c:\TEST.
PDF"

'output some text
Printer.Print "hello world!"

'save the PDF file
Printer.EndDoc

'Append new text to original PDF file
'assign original PDF file
SaveSetting "Dane Prairie Systems", "Win2PDF", "PDFAppendFile", "c:
\TEST.PDF"

'set new output file to maintain the original PDF file
SaveSetting "Dane Prairie Systems", "Win2PDF", "PDFFileName", "c:
\AppendedTest.PDF"

Printer.Print "2nd page added"
Printer.EndDoc

End Sub
```

5.3.1.2 Using the Win32 API

The Microsoft Knowledgebase article Q175535 has information on using the Win32 API from Visual Basic. The Win32 API can be used when the Printer object does not provide the necessary functionality.

1. Create a Standard EXE project in Visual Basic 6.0. Form1 is created by default.

2. Add 2 CommandButtons to Form1.
3. Add the following code to the General Declarations section of Form1:

Option Explicit

```
Private Const LF_FACESIZE = 32

Private Type LOGFONT
    lfHeight As Long
    lfWidth As Long
    lfEscapement As Long
    lfOrientation As Long
    lfWeight As Long
    lfItalic As Byte
    lfUnderline As Byte
    lfStrikeOut As Byte
    lfCharSet As Byte
    lfOutPrecision As Byte
    lfClipPrecision As Byte
    lfQuality As Byte
    lfPitchAndFamily As Byte
    lfFaceName As String * LF_FACESIZE
End Type

Private Type DOCINFO
    cbSize As Long
    lpszDocName As String
    lpszOutput As String
    lpszDatatype As String
    fwType As Long
End Type

Private Declare Function CreateFontIndirect Lib "gdi32" Alias _
    "CreateFontIndirectA" (lpLogFont As LOGFONT) As Long

Private Declare Function SelectObject Lib "gdi32" _
    (ByVal hdc As Long, ByVal hObject As Long) As Long

Private Declare Function DeleteObject Lib "gdi32" _
    (ByVal hObject As Long) As Long

Private Declare Function CreateDC Lib "gdi32" Alias "CreateDCA" _
    (ByVal lpDriverName As String, ByVal lpDeviceName As String, _
    ByVal lpOutput As Long, ByVal lpInitData As Long) As Long

Private Declare Function DeleteDC Lib "gdi32" (ByVal hdc As Long) _
    As Long

Private Declare Function TextOut Lib "gdi32" Alias "TextOutA" _
    (ByVal hdc As Long, ByVal x As Long, ByVal y As Long, _
    ByVal lpString As String, ByVal nCount As Long) As Long ' or Boolean

Private Declare Function StartDoc Lib "gdi32" Alias "StartDocA" _
    (ByVal hdc As Long, lpdi As DOCINFO) As Long

Private Declare Function EndDoc Lib "gdi32" (ByVal hdc As Long) _
    As Long

Private Declare Function StartPage Lib "gdi32" (ByVal hdc As Long) _
    As Long

Private Declare Function EndPage Lib "gdi32" (ByVal hdc As Long) _
    As Long
```

```

Const DESIREDFONTSIZE = 12      ' Could use variable, TextBox, etc.

Private Sub Command1_Click()
' Combine API Calls with the Printer object
  Dim OutString As String
  Dim lf As LOGFONT
  Dim result As Long
  Dim hOldfont As Long
  Dim hPrintDc As Long
  Dim hFont As Long

  Printer.Print "Printer Object"
  hPrintDc = Printer.hdc
  OutString = "Hello World"

  lf.lfEscapement = 1800
  lf.lfHeight = (DESIREDFONTSIZE * -20) / Printer.TwipsPerPixelY
  hFont = CreateFontIndirect(lf)
  hOldfont = SelectObject(hPrintDc, hFont)
  result = TextOut(hPrintDc, 1000, 1000, OutString, Len(OutString))
  result = SelectObject(hPrintDc, hOldfont)
  result = DeleteObject(hFont)

  Printer.Print "xyz"
  Printer.EndDoc
End Sub

Private Sub Command2_Click()
' Print using API calls only
  Dim OutString As String      'String to be rotated
  Dim lf As LOGFONT            'Structure for setting up rotated font
  Dim temp As String           'Temp string var
  Dim result As Long           'Return value for calling API functions
  Dim hOldfont As Long         'Hold old font information
  Dim hPrintDc As Long         'Handle to printer dc
  Dim hFont As Long            'Handle to new Font
  Dim di As DOCINFO            'Structure for Print Document info

  OutString = "Hello World"    'Set string to be rotated

' Set rotation in tenths of a degree, i.e., 1800 = 180 degrees
  lf.lfEscapement = 1800
  lf.lfHeight = (DESIREDFONTSIZE * -20) / Printer.TwipsPerPixelY
  hFont = CreateFontIndirect(lf) 'Create the rotated font
  di.cbSize = 20                 ' Size of DOCINFO structure
  di.lpszDocName = "My Document" ' Set name of print job (Optional)

' Create a printer device context
  hPrintDc = CreateDC(Printer.DriverName, Printer.DeviceName, 0, 0)

  result = StartDoc(hPrintDc, di) 'Start a new print document
  result = StartPage(hPrintDc)   'Start a new page

' Select our rotated font structure and save previous font info
  hOldfont = SelectObject(hPrintDc, hFont)

' Send rotated text to printer, starting at location 1000, 1000
  result = TextOut(hPrintDc, 1000, 1000, OutString, Len(OutString))

' Reset font back to original, non-rotated
  result = SelectObject(hPrintDc, hOldfont)

' Send non-rotated text to printer at same page location
  result = TextOut(hPrintDc, 1000, 1000, OutString, Len(OutString))

  result = EndPage(hPrintDc)     'End the page

```

```

        result = EndDoc(hPrintDc)           'End the print job
        result = DeleteDC(hPrintDc)       'Delete the printer device context
        result = DeleteObject(hFont)     'Delete the font object
    End Sub

    Private Sub Form_Load()
        Command1.Caption = "API with Printer object"
        Command2.Caption = "Pure API"
    End Sub

```

4. Run the Project and click API with Printer object . This will print a single page to the current default printer with "**Printer Object**" and "**xyz**" printed normally and "**Hello World**" printed rotated 180 degrees.

5. Click Pure API . This will print a single page to the current default printer with "Hello World" printed normally and rotated 180 degrees.

5.3.2 Crystal Reports

The following Visual C example shows how to print a document to Win2PDF using Crystal Reports.

```

void CPrinting::PrintPDF(LPTSTR sPrintType, int iPrintMethod)
{
    _TCHAR sFileName[PE_FILE_PATH_LEN] = "";
    short hJob = 0;
    PEPrintOptions PrintOptions;

    PEOpenEngine();
    hJob = PEOpenPrintJob("d:\\pics32\\pics32\\live\\quote.rpt");

    PrintOptions.StructSize      = PE_SIZEOF_PRINT_OPTIONS;
    PrintOptions.startPageN     = 1;
    PrintOptions.stopPageN      = -1;
    PrintOptions.nReportCopies  = 1;
    PrintOptions.collation      = PE_COLLATED;

    _tcscpy(sFileName, "D:\\temp\\test.pdf"); // Here is the PDF file name
    _tcscpy(PrintOptions.outputFileName, sFileName);

    PESetPrintOptions(hJob, &PrintOptions);
    PEOutputToPrinter(hJob, 1);
    PEStartPrintJob(hJob, TRUE);
    PECloseEngine();
}

```

The same example using Visual Basic follows.

```

Public Function printAPIReport(RptName As String, rptPath As String,
    outputPath As String) As Boolean
    Dim PrintOptions As PEPrintOptions
    Dim hjob As Integer

    PEOpenEngine()
    hjob = PEOpenPrintJob(rptPath & RptName)

    PrintOptions.StructSize = PE_SIZEOF_PRINT_OPTIONS
    PrintOptions.StartPageN = 1
    PrintOptions.stopPageN = -1
    PrintOptions.nReportCopies = 1
    PrintOptions.collation = PE_COLLATED

```

```
PrintOptions.outputFileName = "c:\\Temp\\TEST.PDF" & Chr(0)

PESetPrintOptions(hjob, PrintOptions)

PEOutputToPrinter(hjob, 1)

PEStartPrintJob(hjob, True)

PECloseEngine
End Function
```

5.3.3 Microsoft Access

The following example shows the basic code to open and print an Access report to Win2PDF. This example uses SaveSetting to set the PDF file name and will suppress the Win2PDF File Save dialog.

```
Private Sub cmd_PrintToWin2PDF_Click()

'This code assumes that Win2PDF is set as the default printer.
On Error GoTo Err_cmd_PrintToWin2PDF_Click

    Dim stDocName As String

    'set the output file name
    SaveSetting "Dane Prairie Systems", "Win2PDF", "PDFFileName", "c:\AccessTest.
pdf"

    stDocName = "Report to be converted"
    DoCmd.OpenReport stDocName, acNormal

Exit_cmd_PrintToWin2PDF_Click:
    Exit Sub

Err_cmd_PrintToWin2PDF_Click:
    MsgBox Err.Description
    Resume Exit_cmd_PrintToWin2PDF_Click

End Sub
```

Part



6 Dane Prairie Systems Company Information



Information on Win2PDF is available at <http://www.win2pdf.com>

For help on our products, including technical support, send e-mail to support@win2pdf.net

For sales inquiries, send e-mail to sales@win2pdf.com

Our fax number is (612) 435-4926.

Our mailing address is:

Dane Prairie Systems, LLC
P.O. Box 24491
Minneapolis, MN 55424-0491

Index

- 1 -

128 bit encryption 18

- 4 -

40 bit encryption 18

- A -

Access 50
Allow text and graphics to be copied 18
Allow the document to be modified 18
Allow the document to be printed 18
append 10, 40
Application Settings 15
Apply watermark 20, 41, 43
Asian character sets 32
Author 17
AutoCad 21
automatic URL detection 9

- B -

bitmap image quality 31
bookmarks 32

- C -

command line options 4
compression 31
Creating a PDF file 8
Crystal Reports 49
custom page sizes 31

- D -

Dane Prairie Systems Company Information 52
Default Settings 15
Delete after Sending 8
deploying Win2PDF 4
DEVMODE 36

DOCINFO 36
Document Information 17
Document Security 18

- E -

Eastern European character sets 32
e-mail address 41
e-mail subject 41
Embed Fonts 13
Encryption Level 18
Excel 32

- F -

FAQ 30
fax number 52
file name port 30
file options 41
flate 31
fonts 11, 13, 30
footer 22

- H -

header 22

- I -

Internet Explorer 22

- K -

Keywords 17

- L -

legal 32
linearized PDF 32

- M -

mailing address 52
master password 18
Merge Options 40
Merging 10

Microsoft Excel 21
Microsoft Word 21

- N -

noncommercial use 30

- O -

Optimize Image File Size 9
Overwrite existing file 10

- P -

PalmOS 16
Paper Sizes 13
PDF hyperlinks 9
PDF Options 17
PDFAppendFile 40
PDFAuthor 40
PDFFileName 38
PDFKeywords 40
PDFMailNote 41
PDFMailRecipients 41
PDFMailSubject 41
PDFPostFileName 38
PDFPrependFile 40
PDFSubject 40
PDFTitle 40
PDFWatermarkFile 43
Permissions 18
PocketPC 16
prepend 10, 40
Print PDF 41, 8
printer object 45

- R -

REG_EXPAND_SZ 38
Resolution 15

- S -

SaveSetting 36, 45, 50
Send email 41
Send PDF 8
Send to palm 16, 41, 8

Specifying an output file name 30
StartDoc 36
Subject 17

- T -

tagged PDF 16
technical support 52
Title 17
TrueType 11, 13, 30
Type 1 30

- U -

user defined page sizes 31
user password 18

- V -

View PDF 41, 8
Visual Basic 45

- W -

watermark 20, 43
web optimized PDF 32
web server 32
Win2PDF Mail Helper 41
Win32 API 30, 36, 46
Windows 95 30
Windows 98 30
Windows ME 30
workbook 32
worksheets 32